



Mathcad „The Next Generation“

April 2010

Dirk Jordan

Agenda

Mathcad 15.0 highlights

Mathcad Prime 1.0 Preview

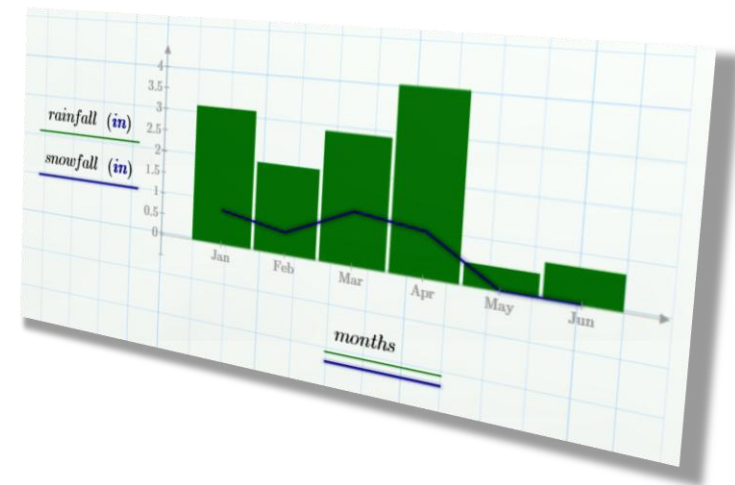
Why We Re-Designed Mathcad

New architecture & user model

Specific highlights of the Preview release

Plans for full release of Mathcad Prime 1.0

Summary / Q&A



Mathcad 15.0 highlights

June, 2010

Next release of traditional Mathcad until full release of Mathcad Prime 1.0 is available and has addressed major functional gaps

Capabilities being planned / considered

Windows 7 support

Microsoft Excel 2007 support

Introduce design of experiments (DoE) functions

Improved integration to KnovelMath (www.knovel.com)

Quickly access and reference technical and engineering standards

Introductory True# (www.truenum.com) integration

Enables traceability for significant numeric constants or requirements

Browser launch on startup (partner awareness and user control)

Consolidated installation and licensing, including academic indication

Symbolic bug fixes, and addressed performance / memory leak issues

Agenda

Mathcad 15.0 highlights

Mathcad Prime 1.0 Preview

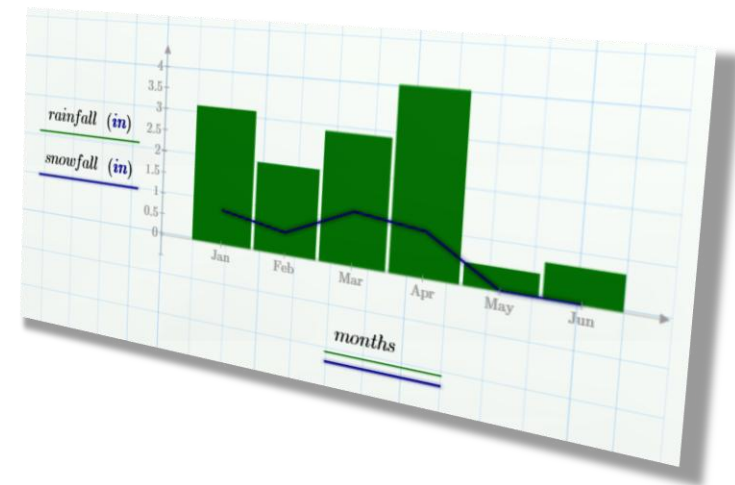
Why We Re-Designed Mathcad

New architecture & user model

Specific highlights of the Preview release

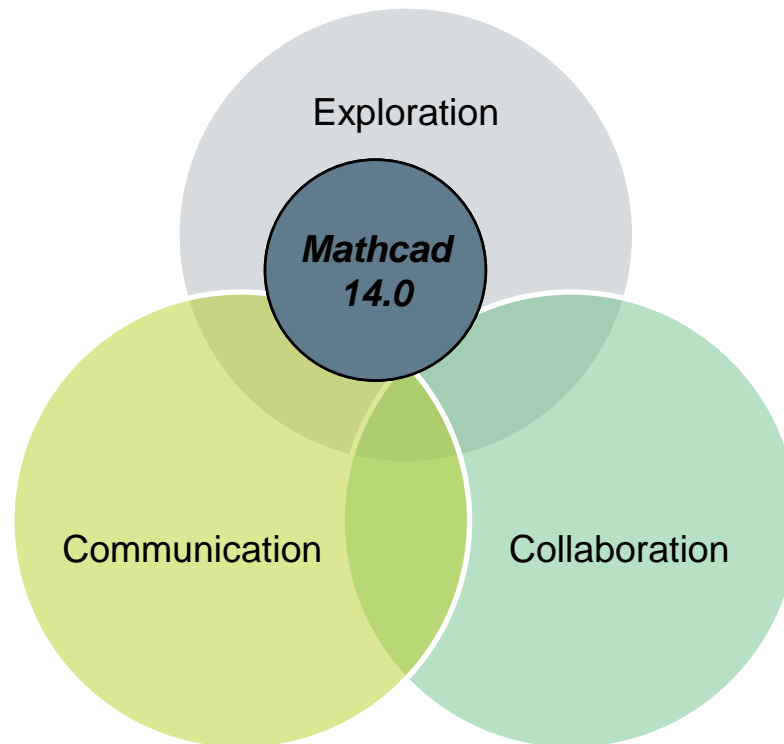
Plans for full release of Mathcad Prime 1.0

Summary / Q&A



Why We Re-Designed Mathcad

Balancing the exploration, communication, and collaboration of engineering calculations



Mathcad Prime 1.0 is designed to achieve this balance, in order to achieve efficiency across the extended enterprise

Why We Re-Designed Mathcad

Improved architecture and user interface:

New design, look-and-feel

Improved usability and “learnability”

New functionality – now and in the future!

In response to the needs of the market:

Problem

Mathcad Prim Σ ™ 1.0

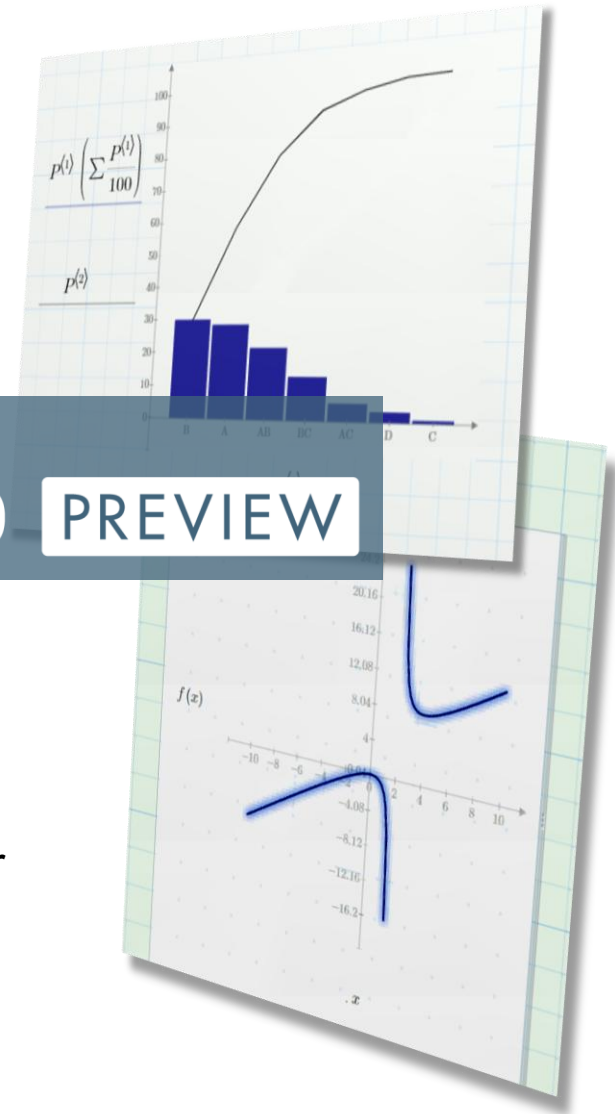
PREVIEW

Mathcad was too desktop-focused on math exploration, without sufficient balance of communication and collaboration capabilities.

Result

Highly-skilled engineers were spending too much of their time creating and formatting documents

Solution...



New Architecture and User Model Mathcad Prime™ 1.0 PREVIEW

Create design documents

... AND

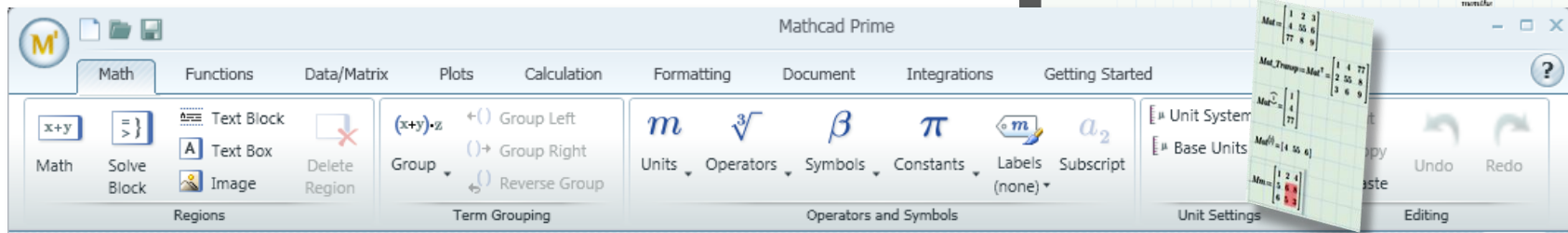
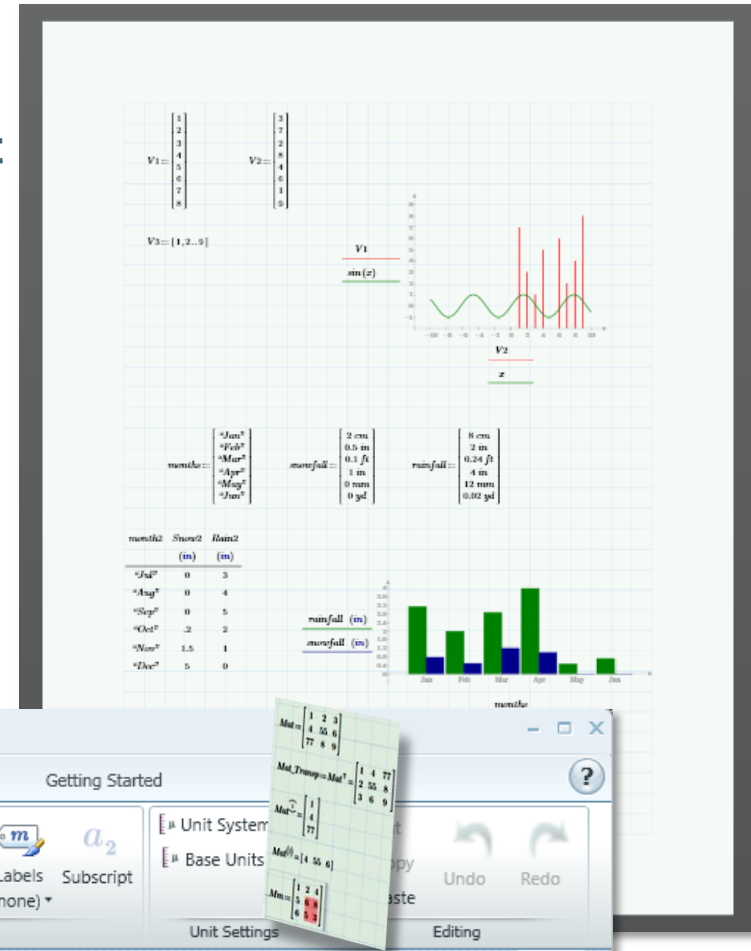
focus on the engineering

Document-centered calculation environment

- Create complex, highly professional engineering design documents quickly and easily, including:
 - Live, readable math
 - Text, images
 - Plots, matrices, tables

Approachable user interface

- Explore complex engineering problems in a user-friendly and familiar environment



New Architecture and User Model **Mathcad**® PrimΣ™ 1.0 **PREVIEW**

Create design documents

... AND

focus on the engineering

Document-centered calculation environment

- Create complex, highly professional engineering design documents quickly and easily, including:
 - Live, readable math
 - Text, images
 - Plots, matrices, tables

Approachable user interface

- Explore complex engineering problems in a user-friendly and familiar environment

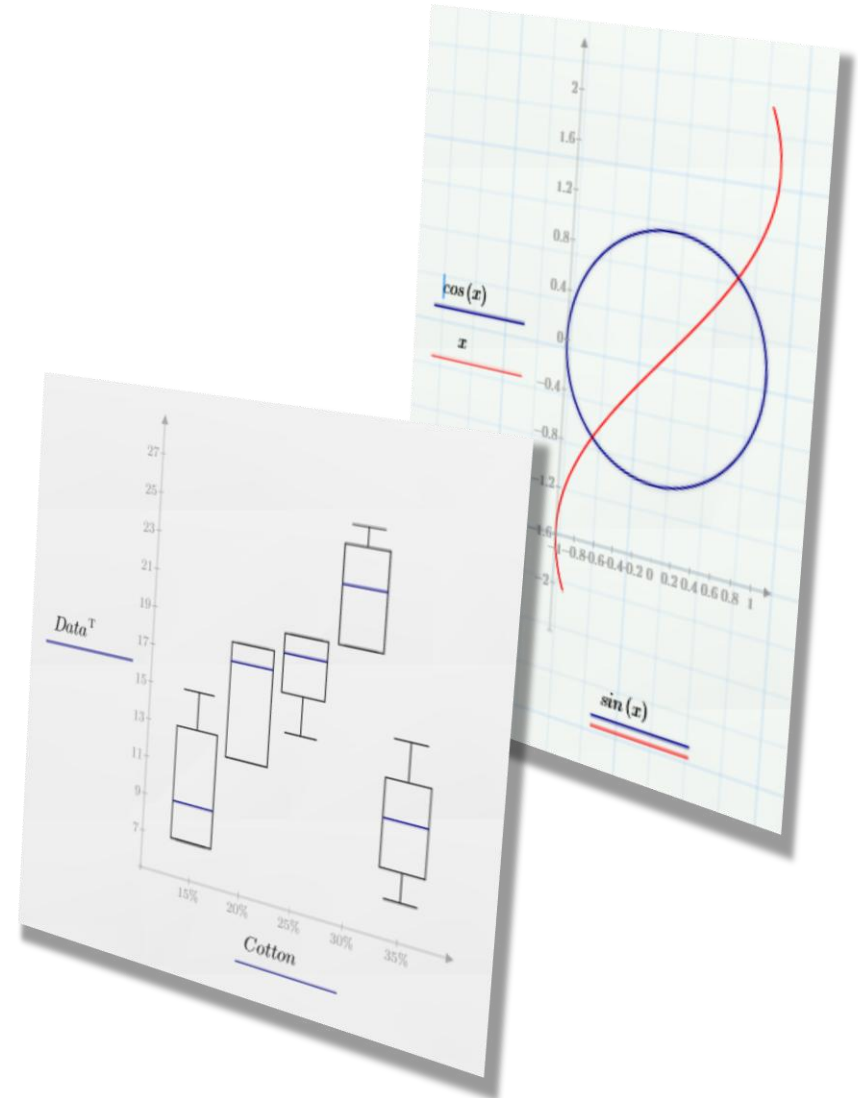
Advanced engineering math exploration

- Display, manipulate, analyze and plot your data using full Engineering Unit support. Access over 600 functions.

Specific Highlights of... Mathcad® PrimΣ™ 1.0 PREVIEW

Primary capabilities

- Task-based, “Fluent UI”
- Engineering notebook feel
- Dynamic unit checking (DUC)
- **New, intuitive equation editor**
- Improved error messaging & tracing
- “Document First” native layout
- Snap-to grid region positioning
- Improved, interactive 2D plots
- **Design of Experiments support**
- Improved solving: solve blocks!



Specific Highlights of... **Mathcad Prime™ 1.0** **PREVIEW**

Primary capabilities, cont.

- New built-in headers and footers
- More intuitive matrix operations

Solving customer challenges:

Capturing IP from aging engineering workforce

Learnability / usability → rapid return on investment

Spend less time documenting & more time engineering

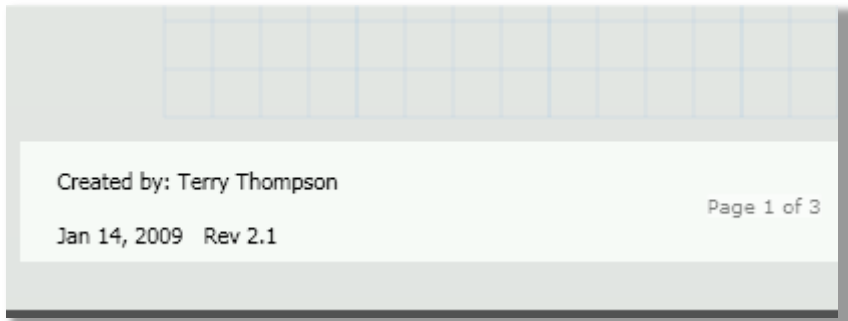
Reuse & leverage content throughout organization

- **Simplified licensing!**

"Nov"	1.5	.15
"Dec"	5	0

Specific Highlights of... Mathcad® PrimΣ™ 1.0 PREVIEW

Primary capabilities, cont.



<i>Month</i>	<i>Snow</i>	<i>Rain</i>
	<i>(in)</i>	<i>(ft)</i>
<i>"Jul"</i>	0	.2
<i>"Aug"</i>	0	.04
<i>"Sep"</i>	0	.1
<i>"Oct"</i>	.2	.03
<i>"Nov"</i>	1.5	.15
<i>"Dec"</i>	5	0

- New built-in headers and footers
- More intuitive matrix operations
- Publish as XPS or PDF
- New **spec table** capabilities
- Mixed units in matrices
- Professional document plotting
- Improved Pro/ENGINEER integration
- Continued integration with Windchill
- Continued integration with ProductPoint
- **Simplified licensing!**

Agenda

Mathcad 15.0 highlights

Mathcad Prime 1.0 Preview

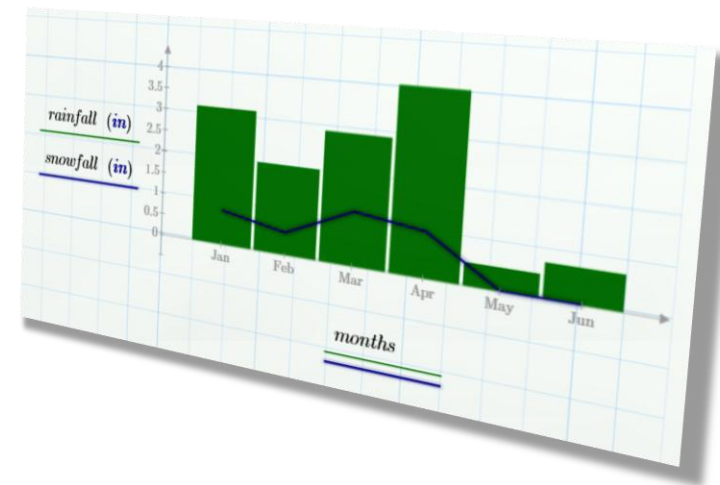
Why We Re-Designed Mathcad

New architecture & user model

Specific highlights of the Preview release

Plans for full release of Mathcad Prime 1.0

Summary / Q&A



Plans for full release of Mathcad Prime 1.0

Address more complex functional gaps while maintaining the usability paradigms established in Mathcad Prime 1.0 Preview

Feature list being considered:

More intuitive programming workflows & UI

Updated symbolics

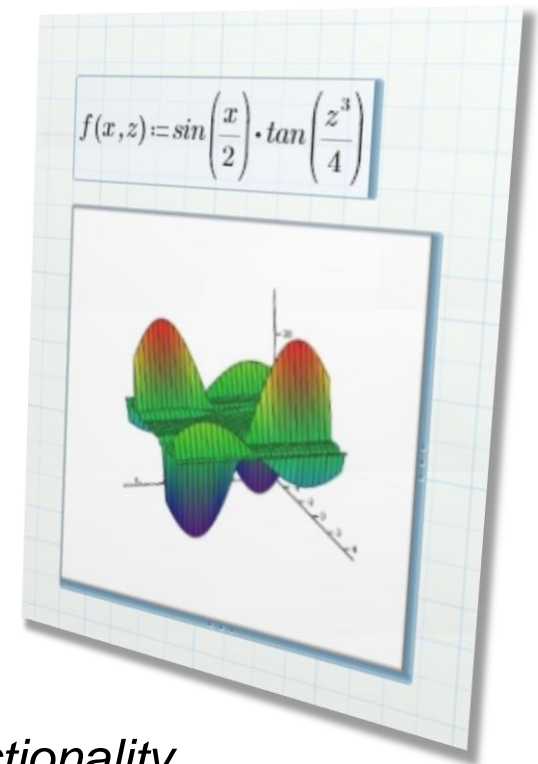
3D plot support

Right-hand margin support

File reference support and enhanced controls

Improved backwards compatibility

Enhancements to Mathcad Prime 1.0 Preview functionality





Thank You